

Supplementary Backward Equations for the Industrial Formulation IAPWS-IF97 of Water and Steam for Fast Calculations of Heat Cycles, Boilers, and Steam Turbines

K. Knobloch and H.-J. Kretzschmar
Zittau/Goerlitz University of Applied Sciences
Faculty of Mechanical Engineering
Department of Technical Thermodynamics
P.O. BOX 1455
D-02754 Zittau, Germany
hj.kretzschmar@hs-zigr.de

K. Miyagawa
Tokyo, Japan

W. Wagner
Ruhr University of Bochum, Germany
Department of Thermodynamics

In 1997, the International Association for the Properties of Water and Steam (IAPWS) adopted the "IAPWS Industrial Formulation 1997 for the Thermodynamic Properties of Water and Steam" (IAPWS-IF97). The IAPWS-IF97 contains fundamental equations $g(p,T)$ for liquid region 1, vapor region 2 and high-temperature region 5, a fundamental equation $f(v,T)$ for the critical and supercritical regions (region 3) and an equation pair for saturation pressure $p_{\text{sat}}(T)$ and for saturation temperature $T_{\text{sat}}(p)$; see Figure 1. Using the fundamental equations, all thermodynamic properties can be calculated from given pressure and temperature in regions 1, 2, 5, or from given specific volume and temperature in region 3.

In addition, the IAPWS-IF97 contains backward equations for the most used implicit functions $T(p,h)$ and $T(p,s)$ in regions 1 and 2 for fast calculations in thermodynamic process modeling. Further dependencies have to be calculated iteratively from the fundamental equations. That means, one- and two-dimensional iterations are necessary for determining thermodynamic properties in process modeling.

Over the past 6 years, IAPWS has established a task group and developed backward equations for water and steam as a supplement to the IAPWS Industrial Formulation 1997. First, backward equations $p(h,s)$ for the liquid and vapor regions were developed and adopted as a supplementary release by IAPWS in 2001 (IAPWS-IF97-S01); see Figure 1. An international survey revealed that backward equations in the critical and supercritical regions were also required in process modeling. Thus the backward equations $T(p,h)$, $v(p,h)$, $T(p,s)$, and $v(p,s)$ were developed for region 3 and adopted as a supplementary release in 2003 and revised in 2004 (IAPWS-IF97-S03rev). Backward equations $p(h,s)$ developed for the critical and supercritical regions were then adopted by IAPWS in 2004 (IAPWS-IF97-S04). This supplementary release also contains a backward equation for the saturation temperature $T_{\text{sat}}(h,s)$ in the part of the two-phase region important for steam-turbine calculations. Finally, backward equations $v(p,T)$ for the critical and

supercritical regions (region 3) were published in a supplementary release in 2005 (IAPWS-IF97-S05); see Figure 1.

In order to determine if a given state point is located in one of the single-phase regions or in the two-phase region, iterations are necessary for the backward functions of the given properties (p,h), (p,s) or (h,s). To avoid these iterations, special region-boundary equations were developed and adopted as a part of the supplementary releases IAPWS-IF97-03rev and IAPWS-IF97-S04.

In conclusion, using the equations of IAPWS-IF97, the supplementary backward equations, and the region-boundary equations, all thermodynamic properties from the input variables (p,T), (p,h), (p,s) and (h,s) can be calculated without iterations in the entire range of validity of IAPWS-IF97, including determination of the region (except for high temperature region 5).

The numerical consistencies of the backward and region-boundary equations are sufficient for most heat-cycle, boiler, and steam-turbine calculations. For users not satisfied with the numerical consistency, the equations are still recommended for generating good starting points for an iterative process.

The supplementary backward equations and the region-boundary equations presented will significantly reduce the computing time for calculating processes. Particularly, the computing time of process calculations which use functions of enthalpy and entropy will be reduced.

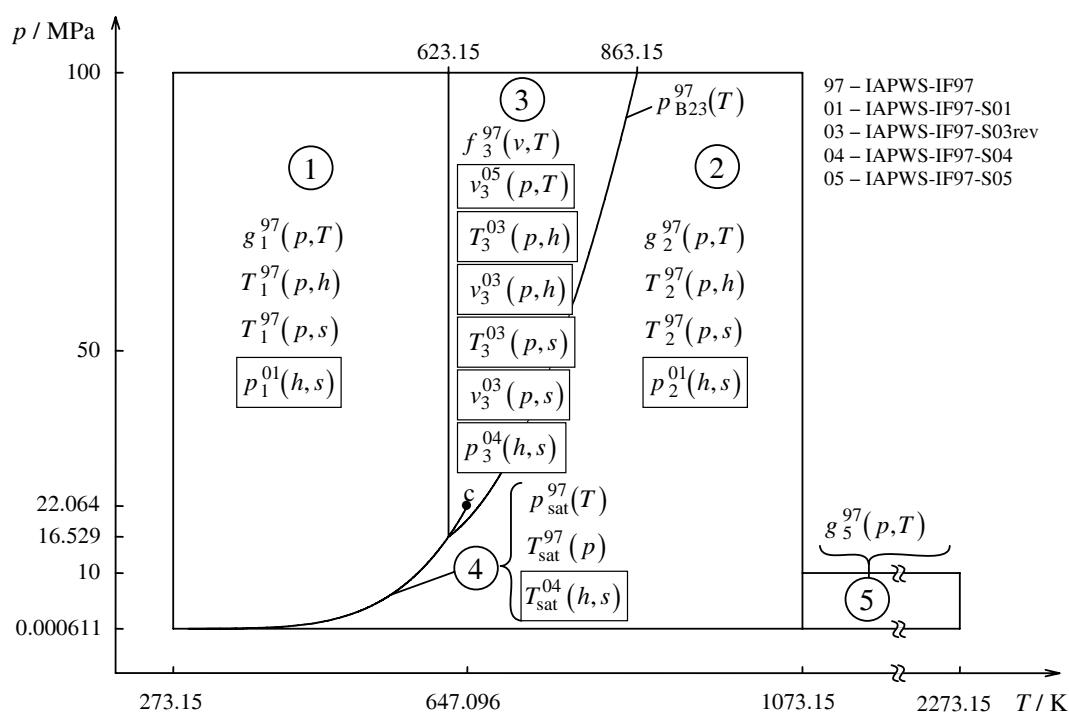


Figure 1. Regions and equations of the IAPWS-IF97, and supplementary backward equations